



**Black Brick**  
Finding perfect properties

Apartment 404, Westminster Green, 8 Dean Ryle Street, SW1P 4DA

Guide Price £1,350,000 - Leasehold  2  2  1

# Key Features

A beautifully modernised two bedroom apartment located within a highly sought after portered block in the heart of Westminster.

- 24 hour concierge
- Two bedrooms
- Two bathrooms
- Resident's Gym
- 4th floor
- Lift
- Underground parking space
- 945ft<sup>2</sup>

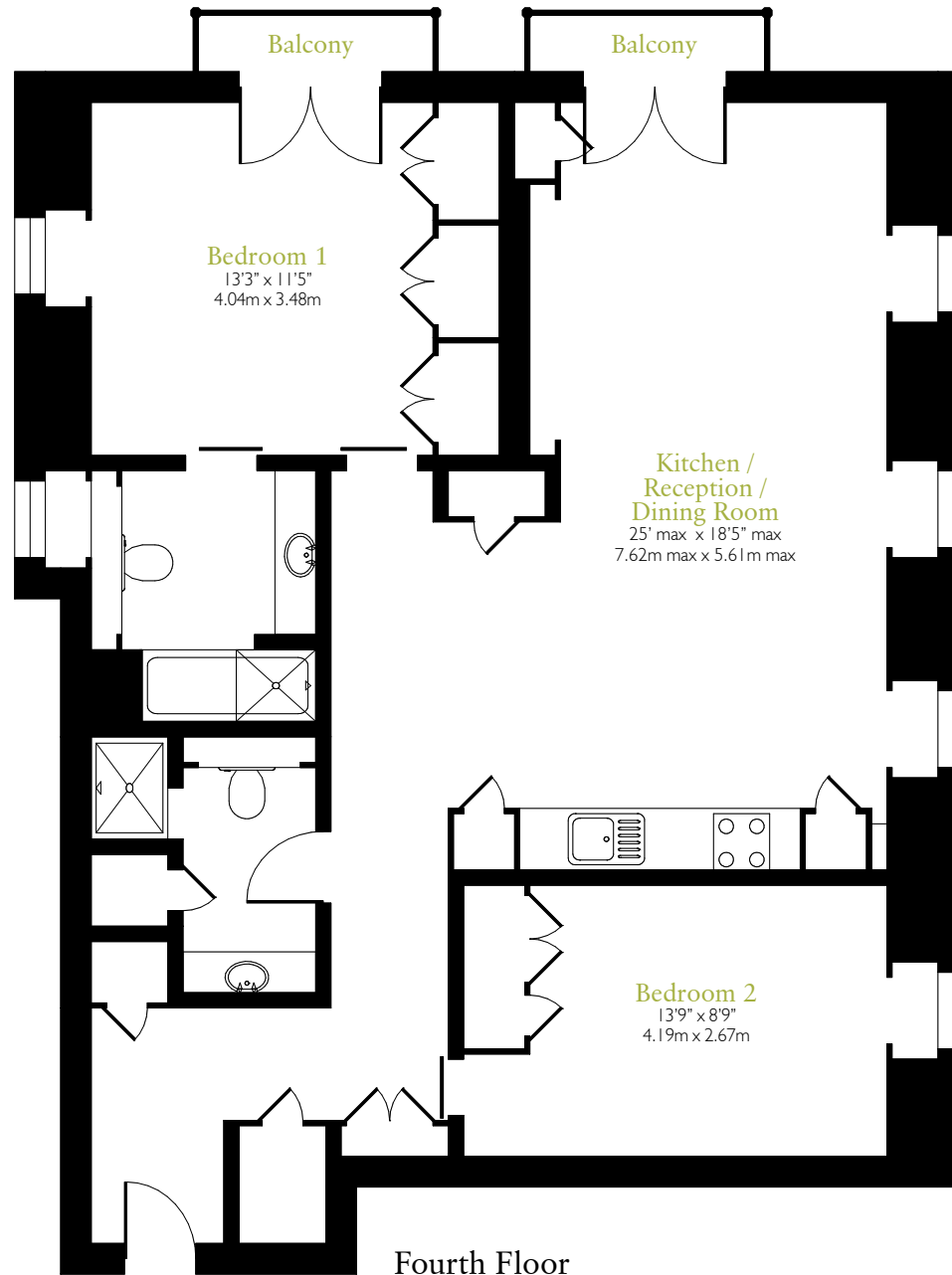
**Tenure:**  
Leasehold,  
plus Share of Freehold  
(approx. 985 years  
remaining)

**Service Charge:**  
£6,218 per annum



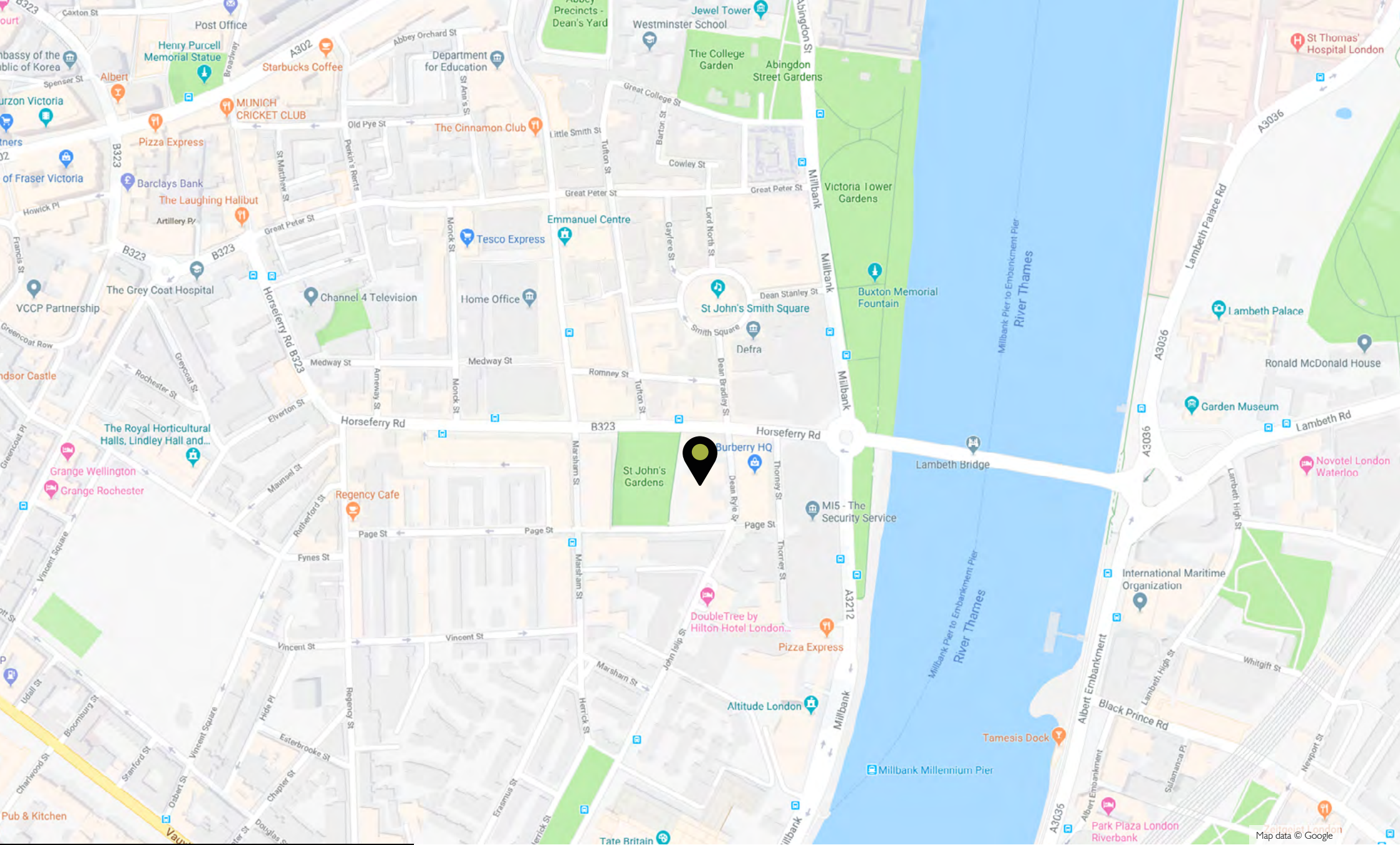
# Floor Plan

Approx. gross internal area 945ft<sup>2</sup> / 87.8m<sup>2</sup>



Fourth Floor

All dimensions are approximate and quoted for guidance only. Reference to appliances and/or services does not imply they are necessarily in working order or fit for purpose. Buyers are advised to obtain verification from their solicitors as to the Freehold/ Leasehold status of the property and any fixtures and fittings. These particulars do not constitute or form any part of an offer or contract nor may they be regarded as representations. All interested parties must themselves verify their accuracy.



**Black Brick**

Finding perfect properties

black-brick.com

+44 (0) 20 3141 9861

15 Bruton Place, Mayfair  
London W1J 6LU

info@black-brick.com

## Local Area

Dean Ryle Street is enviably located in Central London allowing residents access to some of London's most iconic Landmarks including The Houses of Parliament and Big Ben whilst the open spaces of St. James's Park and Green Park are a 10 minute walk away.

Local Authority: Westminister

 St. James's Park