



Black Brick
Finding perfect properties

49 Thames Point, The Boulevard, Imperial Wharf, SW6 2SX

Asking Price £3,500,000 - Leasehold  3  3  1

Key Features

A 3 bedroom sub penthouse on the 10th floor of a modern, riverside development with a unique terrace offering more than 1000 square feet of incredible outside space.

- 2599 square feet
- 10th floor
- 3 bedrooms
- 3 en suite bathrooms
- Terrace and two balconies
- Underground parking
- Gym
- 24 hour concierge

Tenure:

Lease expires 25th
December 2998

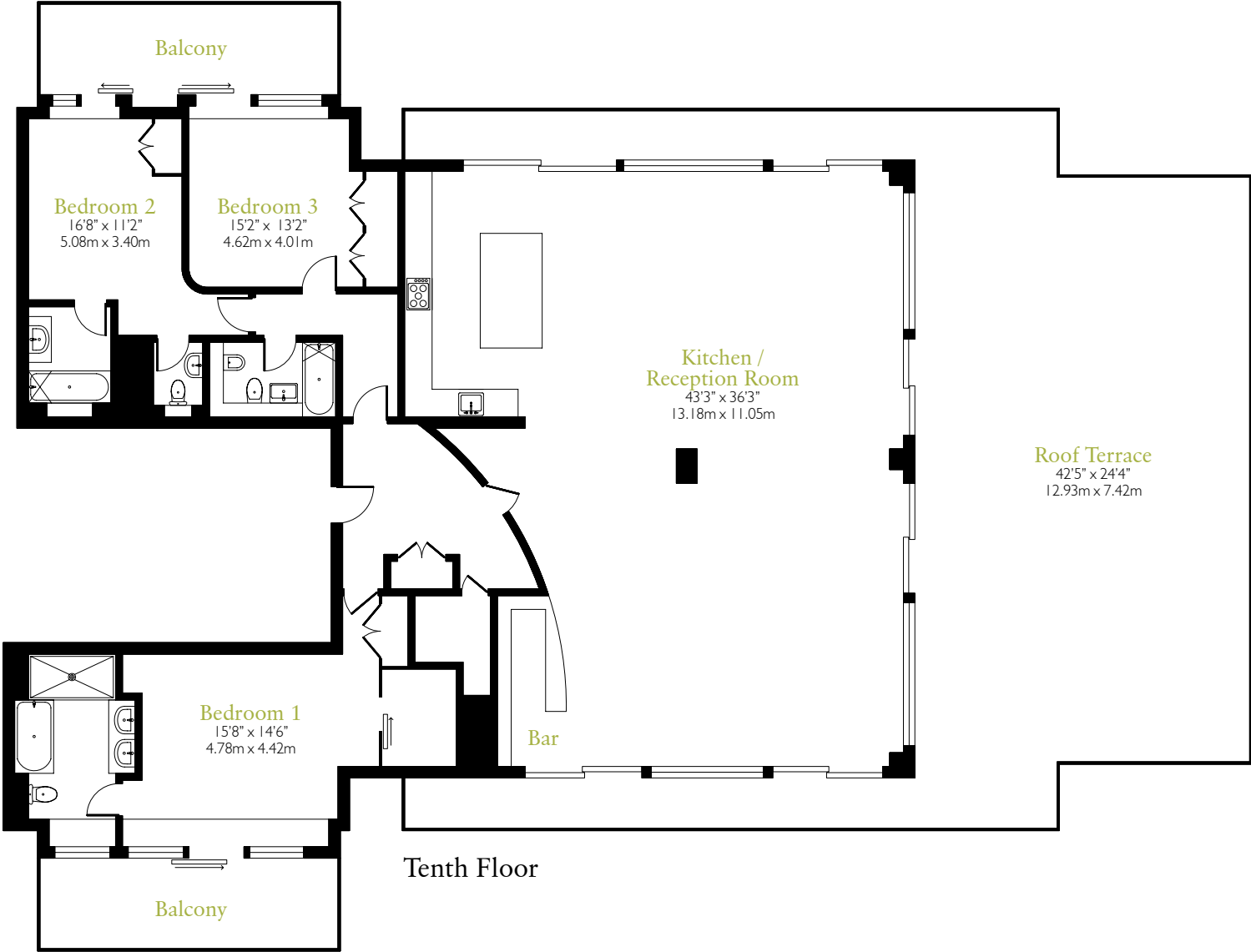
Service Charge:

£18,000 per annum



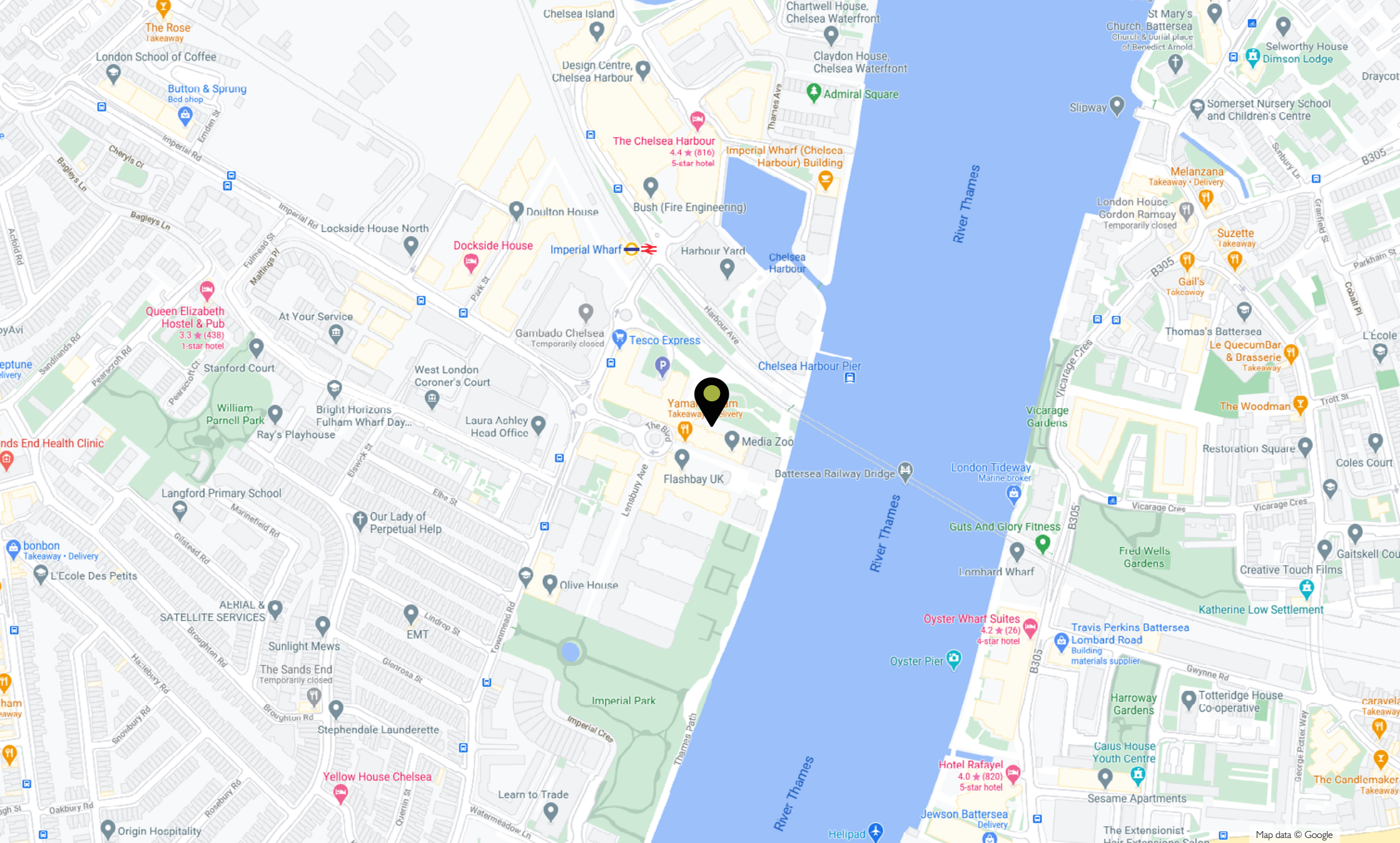
Floor Plan

Approx. gross internal area 2599ft² / 241.4m²



Tenth Floor

All dimensions are approximate and quoted for guidance only. Reference to appliances and/or services does not imply they are necessarily in working order or fit for purpose. Buyers are advised to obtain verification from their solicitors as to the Freehold/ Leasehold status of the property and any fixtures and fittings. These particulars do not constitute or form any part of an offer or contract nor may they be regarded as representations. All interested parties must themselves verify their accuracy.



Black Brick

Finding perfect properties

black-brick.com

+44 (0) 20 3141 9861


**15 Bruton Place, Mayfair
London W1J 6LU**

info@black-brick.com

Local Area

Imperial Wharf is a riverside development located on the border of Fulham and Chelsea offering 24 hour concierge and security. The shops, cafés and restaurants of Parsons Green and New Kings Road are both within walking distance.

Local Authority:
Hammersmith & Fulham

 Imperial Wharf