



Black Brick

Finding perfect properties

11 Ellesmere Court, Fulham Road, SW10 9TN

Asking Price £950,000 - Leasehold  2  2  1

Key Features

A modern second floor apartment located on the Fulham Road with access to the shops, bars and restaurants of Chelsea and South Kensington.

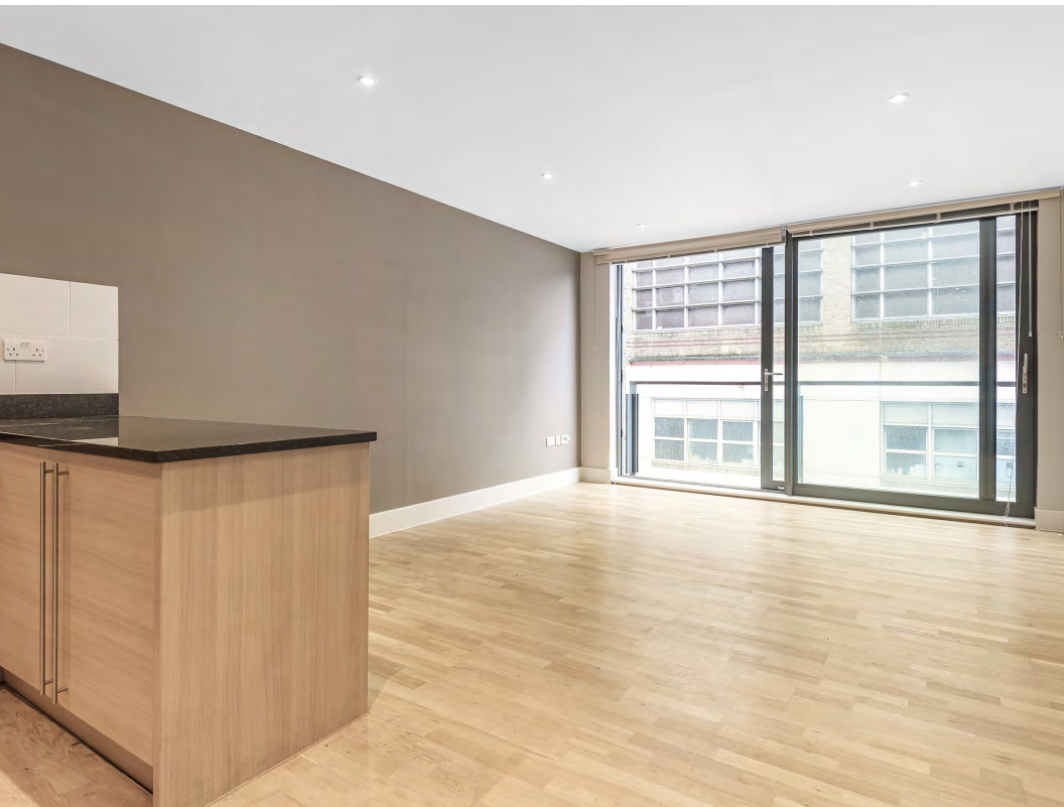
- Porter
- Lift
- Underground parking
- 2 bedrooms
- 2 bathrooms
- Open plan kitchen/ reception room
- 803ft²

Tenure:

Leasehold. Lease expiry date: 15th June 2157

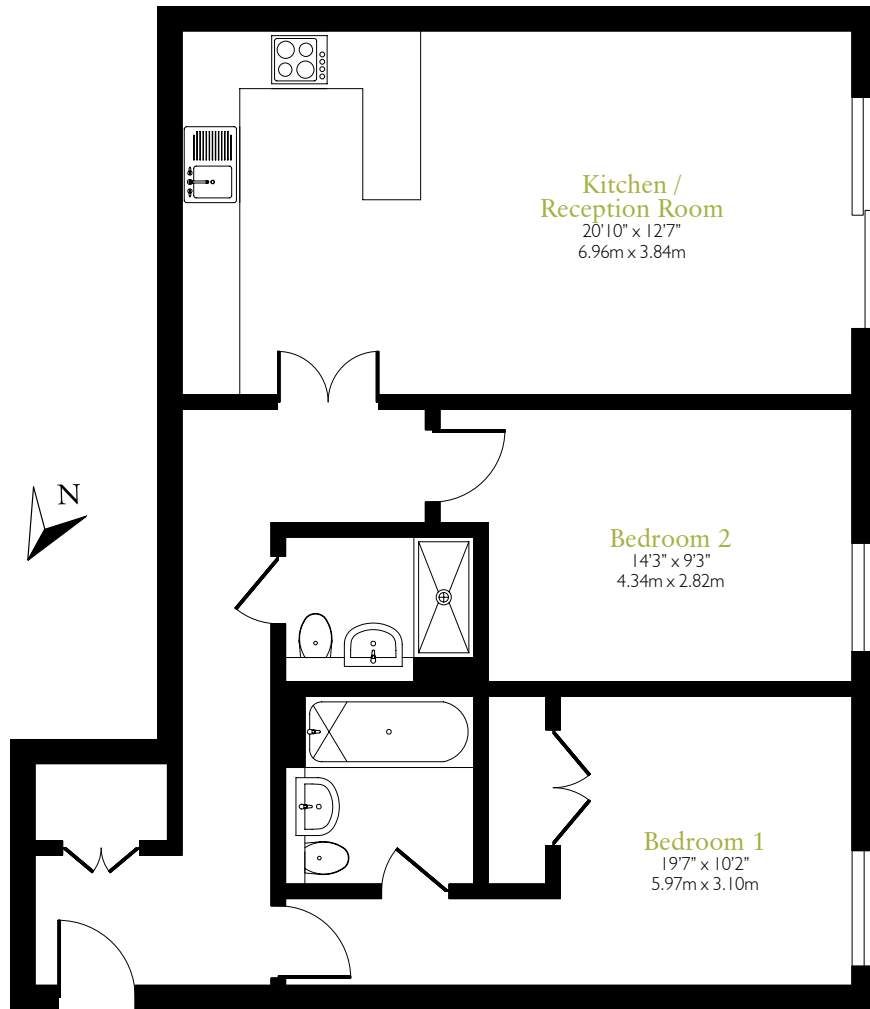
Service Charge:

£4528.04 per annum (includes contribution to a reserve fund)



Floor Plan

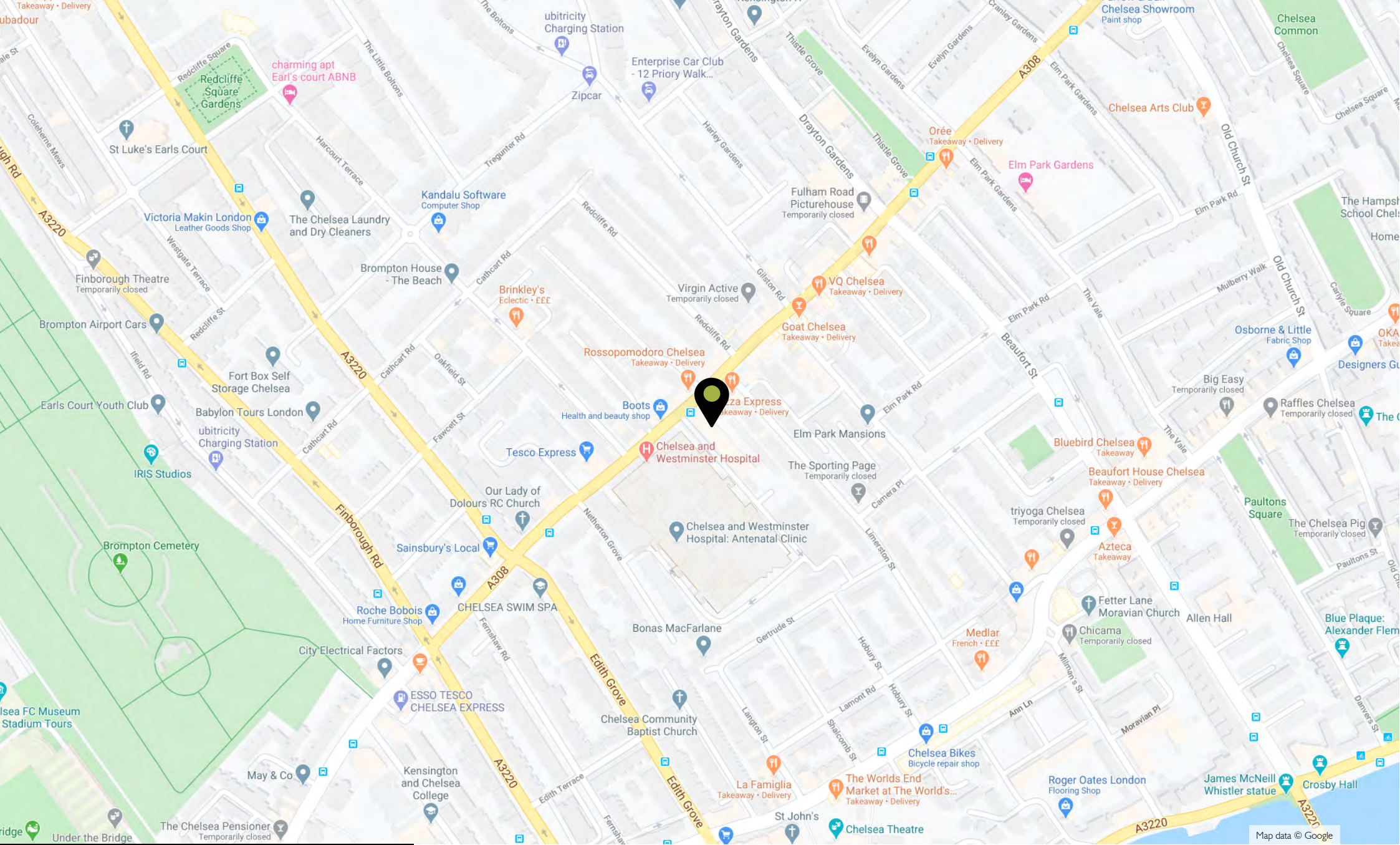
Approx. gross internal area 803ft² / 74.5m²



Second Floor

All dimensions are approximate and quoted for guidance only. Reference to appliances and/or services does not imply they are necessarily in working order or fit for purpose. Buyers are advised to obtain verification from their solicitors as to the Freehold/Leasehold status of the property and any fixtures and fittings. These particulars do not constitute or form any part of an offer or contract nor may they be regarded as representations. All interested parties must themselves verify their accuracy.





Local Area

The Fulham Road is famous for its wide range of shops, cafes, delis and restaurants whilst the Kings Road and South Kensington are walking distance from the apartment.

Local Authority:
Kensington and Chelsea

